

# manuscript example

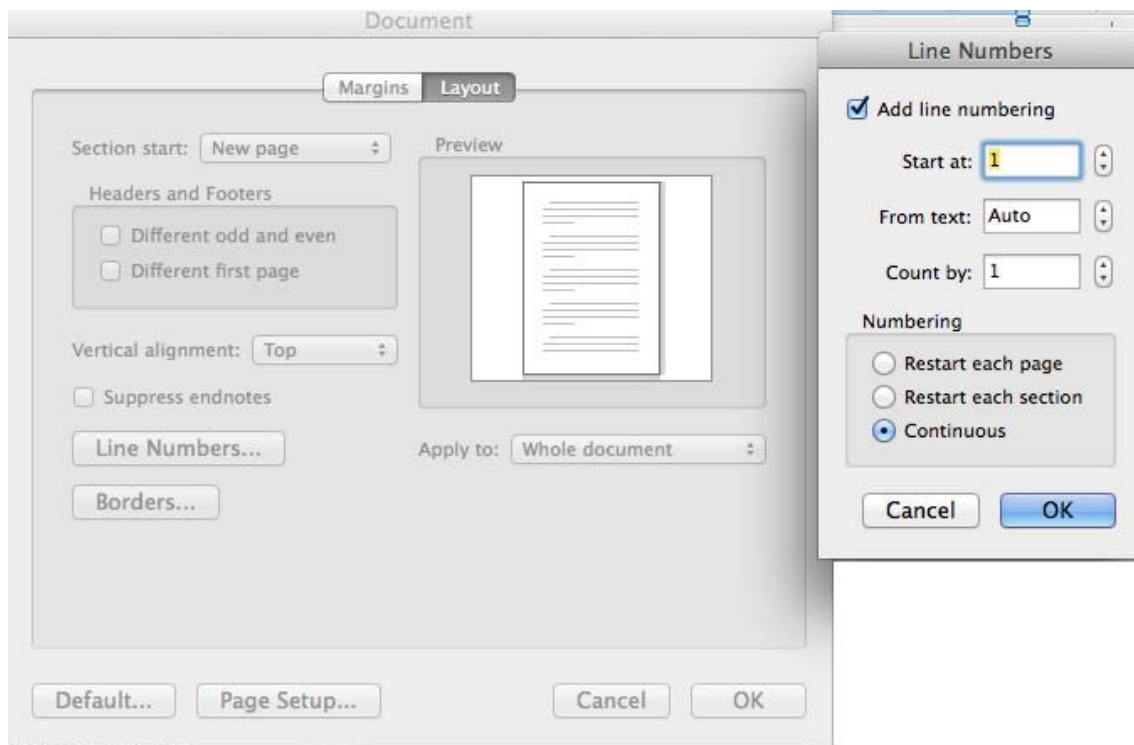
## General information:

The manuscript must be prepared with a standard word processor (preferably Microsoft Word or OpenOffice).

Pages should be in A4 format and numbered.

Times New Roman 12 pt is the advised font. Lines should be left numbered *in continuum\**, to make the referees' work easier, double-spaced and without interruption of page.

**\* HOW TO ADD LINES NUMERATION -> see figure below**



# manuscript example

**Title (without acronyms)**

**Author One,<sup>1</sup> Author Two,<sup>2</sup> Author Three,<sup>2</sup> Author Four<sup>3</sup>**

<sup>1</sup>Department, Institution, City, State or Province, Country

<sup>2</sup>Department, Institution, City, State or Province, Country

<sup>3</sup>Department, Institution, City, State or Province, Country

Correspondence: Author One, Department, Institution, address, postal code, city, State or

Province, Country. Tel. +39.001.111111 - Fax: +39. 001.222222. Email:

[correspondingauthor@email.com](mailto:correspondingauthor@email.com)

**COMPULSORY DECLARATIONS** (papers submitted without these declarations will not be considered for evaluation).

**Acknowledgments:** *Acknowledgements should include contributions from anyone who does not meet the criteria for authorship.*

**Funding:** *Funder name and/or grant/award numbers, if any.*

**Contribution:** *Acknowledgement that all authors have contributed significantly and that all authors agree with the content of the manuscript. EXAMPLE: XL, ZX, experiments concept and design; SX, experiments performing; SY, MZ, analysis and interpretation of experiments results. All the authors have read and approved the final version of the manuscript and agreed to be accountable for all aspects of the work.*

**Conflict of interest:** *The authors declare that no conflict of interest / Author One is employed by..... Author Two received grants from .....*

**Availability of data and materials:** ***Example 1:** All data generated or analyzed during this study are included in this published article. **Example 2:** The data used to support the findings of this study are available from the corresponding author upon request. **Example 3:** The datasets used and/or analyzed during the current study are available from the corresponding author on reasonable request.*

# manuscript example

**Ethics approval and consent to participate:** *Example:* The study protocol was approved by the Ethical Review Committee of the University of ..... (protocol no. 123456 dated yy/mm/dd); *Example:* Institutional review board approval was not required for this study as only de-identified compliant data were used in the analysis; *Example:* The study trial was approved by the *Ethics Committee of the University of ..... on June 3, 2020*. The committee assessed the planned project as ethically unobjectionable. Written consent to participate were obtained from all study participants.

**Patient consent for publication:** *Example:* Not applicable.

**Informed consent:** *Example:* Written informed consent was obtained from a legally authorized representative(s) for anonymized patient information to be published in this article. The manuscript does not contain any individual person's data in any form.

## **FOR CASE REPORTS:**

**Availability of data and materials:** All data underlying the findings are fully available.

**Ethics approval and consent to participate:** *No ethical committee approval was required for this case report by the Department, because this article does not contain any studies with human participants or animals. Informed consent was obtained from the patient included in this study.*

**Consent for publication:** *The patient(s) gave his/her/their written consent to use his personal data for the publication of this case report and any accompanying images.*

# manuscript example

## Abstract

1 *The abstract should start with a clear statement of the objective and must conclude with*  
2 *one or two sentences that highlight important conclusions and should summarise*  
3 *pertinent results in a brief but understandable form. References or tables are never cited*  
4 *in the abstract.*

5 Please consult the **authors' guidelines for the journal** to which you are submitting in  
6 order to confirm that your manuscript will comply with the journal's requirements.

7 .....

8 .....

9

10 **Key words:** XXXX, XXXXXX, XXXXXX, XXXXX, XXXXX (maximum 6 key words).

# manuscript example

11 **Introduction**

12 **TEXT**

13 *Monaldi Archives for Chest Disease* is an international scientific journal of the  
14 Istituti Clinici Scientifici Maugeri, Pavia, Italy, dedicated to the advancement of  
15 knowledge in all fields of cardiopulmonary medicine and rehabilitation [1].

16 *Monaldi Archives for Chest Disease* publishes original articles, new  
17 methodological approaches, reviews, opinions, editorials, position papers on all aspects  
18 of cardiac and pulmonary medicine and rehabilitation, and, in addition, provides a forum  
19 for the inter-exchange of information, experiences and views on all issues of the  
20 cardiology profession, including education [2,3]. Accordingly, original contributions on  
21 nursing, exercise treatment, health psychology, occupational medicine, care of the  
22 elderly, health economics and other fields related to the treatment, management,  
23 rehabilitation and prevention of cardiac and respiratory disease are welcome.

24 *Monaldi Archives for Chest Disease* promotes excellence in the profession of  
25 cardiology and pneumology through its commitment to the publication of research,  
26 support to continuous education, and encouragement and dissemination of best practices  
27 [4-6]. .....

28

29 **Materials and Methods\***

30 **Subheading(s) if needed (e.g., Patients – Statistical analysis)**

31 **TEXT**.....

32 When reporting experiments on human subjects, authors should indicate whether the  
33 procedures followed were in accordance with the ethical standards of the responsible  
34 committee on human experimentation (institutional and national)

# manuscript example

35 e.g., *The experiment has been conducted under the authorization of the Ethic*  
36 *Committee of the University of ..... (Italy), with document no. 1234567.....*

37       The inclusion criteria were: i) ....., ii) Clinical signs and symptoms of  
38 ....., and iii) comorbidities ..... Exclusion criteria were: ..... (Table 1). .

39 [4,5]. .....[5-9]; .....[1,2].....

40 .....

41 .....

42

## 43 **Subheading**

44 .....

45 .....

46 .....

47 .....

48 ..... **(Table 3)**.

49

# manuscript example

50 **Results**

51 **Subheading(s) if needed (e.g., Radiographic findings)**

52 **TEXT**.....

53 .....

54 .....

55 ..... **(Figure 1).**

56 .....  
.....

57 ..... **(Table 3 - Figure 2).**

58 .....  
.....

59 .....

60 .....

61 .....**(Table 4).**

62 .....  
.....

63 .....

64 .....

65 .....

66

67 **Discussion**

68 .....  
.....

69 .....

70 .....

71 ..... [10-17] .

72 ..... [18], .....

73 ..... [19,20].....

# manuscript example

74 **Conclusions**

75 .....

76 .....

77 .....

78 ..... [20-27].



# manuscript example

## References

- 79 1. Liu JY, Martinian L, Thom M, Sisodiya SM. Immunolabeling recovery in archival,  
80 post-mortem, human brain tissue using modified antigen retrieval and the catalyzed  
81 signal amplification system. *J Neurosci Methods* 2010;190:49-56.
- 82 2. Eisele S, Krumbholz M, Fischer MT, et al. Prospects of transcript profiling for  
83 mRNAs and MicroRNAs using formalin-fixed and paraffin-embedded dissected  
84 autoptic multiple sclerosis lesions. *Brain Pathol* 2012;22:607-18.
- 85 3. Carturan E, Tester DJ, Brost BC,. postmortem genetic testing for conventional  
86 autopsy-negative sudden unexplained death: An evaluation of different DNA  
87 extraction protocols and the feasibility of mutational analysis from archival paraffin-  
88 embedded heart tissue. *Am J Clin Pathol* 2008;129:391-7.
- 89 4. Wimmer I, Tröschler AR, Brunner F, et al. Systematic evaluation of RNA quality,  
90 microarray data reliability and pathway analysis in fresh, fresh frozen and formalin-  
91 fixed paraffin-embedded tissue samples. *Sci Rep* 2018;8:6351.
- 92 5. Marwitz S, Kolarova J, Reck M, et al. The tissue is the issue: improved methylome  
93 analysis from paraffin-embedded tissues by application of the HOPE technique. *Lab*  
94 *Invest* 2014;94:927-33.
- 95 6. Sas L, Van Laere S, Dierick AM, et al. Study assessing the quality of quantification  
96 of estrogen receptor protein expression by immunohistochemistry and gene  
97 expression in breast cancer. *Pathol Res Int* 2014;2014:372653.
- 98 7. Engel KB, Moore HM. Effects of preanalytical variables on the detection of proteins  
99 by immunohistochemistry in formalin-fixed, paraffin-embedded tissue. *Arch Pathol*  
100 *Lab Med* 2015;135:537-43.
- 101 8. Wilson RP, 1994. Utilization of dietary carbohydrate by fish. *Aquaculture* 124:67-80.
- 102 9. ....
- 103 10. ....
- 104 11. ....

105

# manuscript example

106 Table 1. Adult fixation protocols xxxxxxxx.

Patients (age)	Intraepithelial, tn/1 Total number	Intraepithelial, an/1 Average number	Subepithelial, tn/1 Total number	Subepithelial, an/1 Average number
1 (61)	54/12.2	8/1.5	3/12.2	2/1.5

107 ° Xxxxx xxxxx xxxxx; #Premix supplies per kg: .....DM, dry matter; DE, digestible energy.

108

109 Table 1. Mander's co-localization coefficients, at 30 min and 24 h.

Mander's co-localization coefficients	Control 30 min	10 ng/mL leptin 30 min	100 ng/mL leptin 30 min	Control 24 h	10 ng/mL leptin 24 h	100 ng/mL leptin 24 h
tM1	0.572 (57%) ± 0.049 (5%)	0.577 (58%) ± 0.042 (4%)	0.529 (53%) ± 0.046 (5%)	0.452 (45%) ± 0.050 (5%)	0.456 (46%) ± 0.040 (4%)	0.487 (49%) ± 0.044 (4%)
tM2	0.497 (50%) ± 0.030 (3%)	0.561 (56%) ± 0.020 (2%)	0.542 (54%) ± 0.022 (2%)	0.536 (54%) ± 0.028 (3%)	0.480 (48%) ± 0.024 (2%)	0.511 (51%) ± 0.020 (2%)

110

111

tM1, fractional co-localization coefficient for F-actin; tM2, fractional co-localization coefficient for cofilin; mean ± SEM; n=28-30 per group.

**\*Tables:** Tables are numbered consecutively in Arabic numbers without “no.” before the number. References should be made in the text to each table. The desired style of presentation can be found in the above sample and in published articles. Titles of tables should be descriptive enough to be able to stand alone. **Do not present the same data in tabular and graphic form.** There's no limited tables number, but they must be in a reasonable number. **Table footnotes:** please use the following symbols, in this order, for callouts:

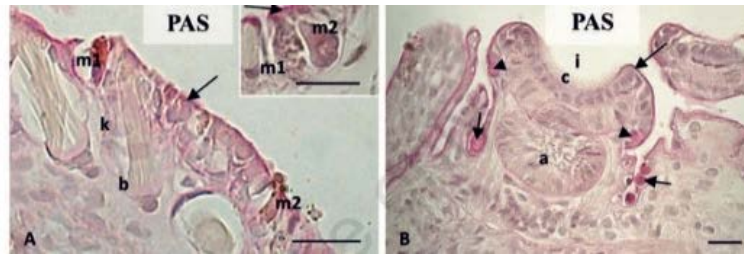
- o
- #
- §
- ^
- \$

# manuscript example

112 Table 3. XXXXXXXXXXXXXXXXXXXX XXXXX.

113 Table 4. XXXXXXXXXXXXXXXXXXXX XXXXX.

# manuscript example



114 Figure 1. xxxxxxxxxxxxxxxx.  
115  
116

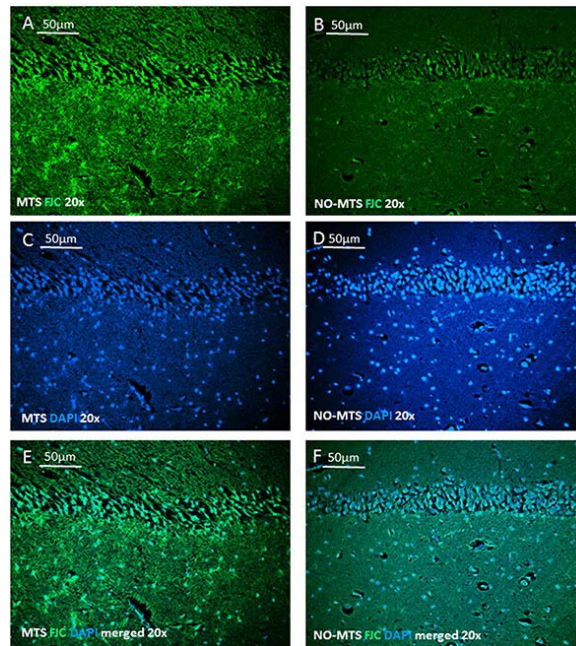
**\*Figures:** Figures are numbered consecutively in Arabic numbers. References should be made in the text to each figure. Each figure should have a caption. The term “figure” is used also for graphs and photos. Symbols and abbreviations used in figures can be defined in the figure caption or note or within the figure itself. Lettering of figures (letters, numbers, symbols, etc.) must be clearly labelled and sized in order to remain legible after the image is reduced for publication. Please avoid the use of **bold** face or greater size for the characters. The figures must be submitted as .tiff or .jpg files, with the following digital resolution:

*Colour (saved as CMYK):*                    *minimum 300 dpi*  
*Black and white/grays:*                    *minimum 600 dpi*  
*one column width (8.5 cm) or 2 column widths (17.5 cm).*

**Combined figures:** if the figure contains two or more panels or subpanels, make sure a description for each panel is provided, in the order in which they are presented. Different panels should be identified by capital letters and a description of each panel should be identified in the figure legend by the related capital letter in brackets.

If symbols are used, make sure such symbols are clearly distinguished from the letters used to identify each panel. **See Figure 2 below as an example.**

# manuscript example



117 Figure 2. Human adult XXXXXX staining of XXXXX neurodegeneration, magnification  
118 20x. A) Monolateral temporal post-traumatic epilepsy with left mesial temporal sclerosis;  
119 B) Controlateral temporal lobe in absence of neurodegeneration; C) DAPI in blue of left  
120 MTS; D) DAPI in blue of contralateral side. E, F) merged view of A-C and B-D.