

## SUPPLEMENTARY MATERIAL

### Coronary plaques and pericardial fat volume assessment in patients with metabolic syndrome being evaluated for suspected coronary artery disease

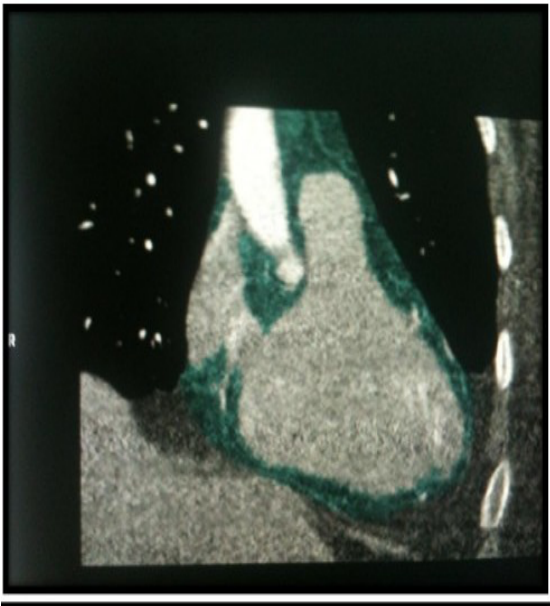
Abdulameer A. Al-Mosawi,<sup>1</sup> Hussein Nafakhi,<sup>2</sup> Wasan kadhum Abbas,<sup>3</sup> Hayder Nafakhi<sup>4</sup>

<sup>1</sup>Radiology Department, Medicine College, University of Kufa, Najaf; <sup>2</sup>Internal Medicine Department, Medicine College, University of Kufa, Najaf; <sup>3</sup>Radiology Department, Al-Manara College for Medical Sciences, Amarah city, Maysan Governorate; <sup>4</sup>Medicine College, University of Kufa, Najaf, Iraq

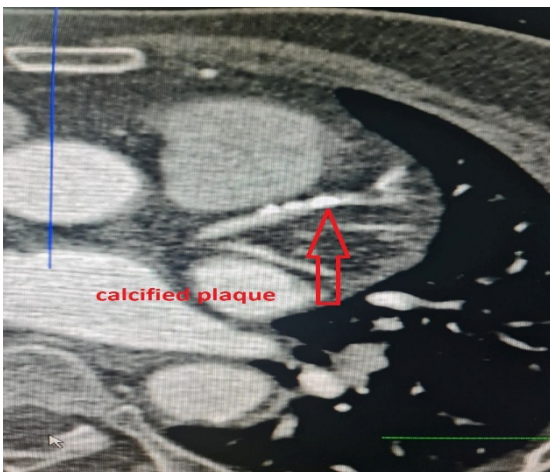
**Correspondence:** Hussein Nafakhi, Internal Medicine Department, Medicine College, University of Kufa, P.O. 21, Kufa, Najaf, Iraq.

Tel.: +964 78 218 41 16; Fax: +964 34 09 52. E-mail: [husseinaf.alnaffakh@uokufa.edu.iq](mailto:husseinaf.alnaffakh@uokufa.edu.iq)

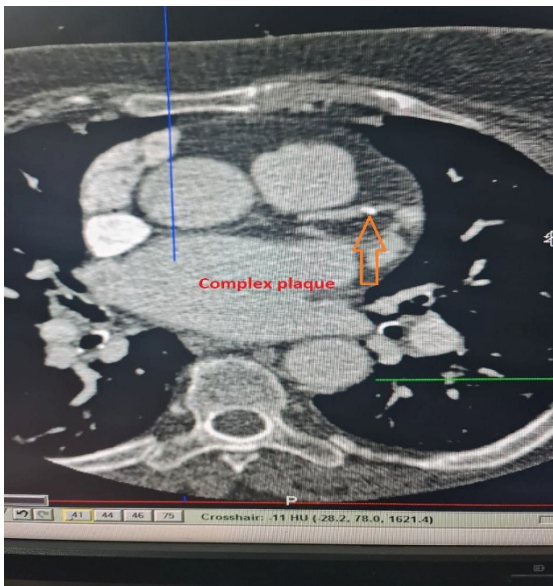
**Key words:** metabolic syndrome, pericardial fat, coronary atherosclerosis, plaque, angiography.



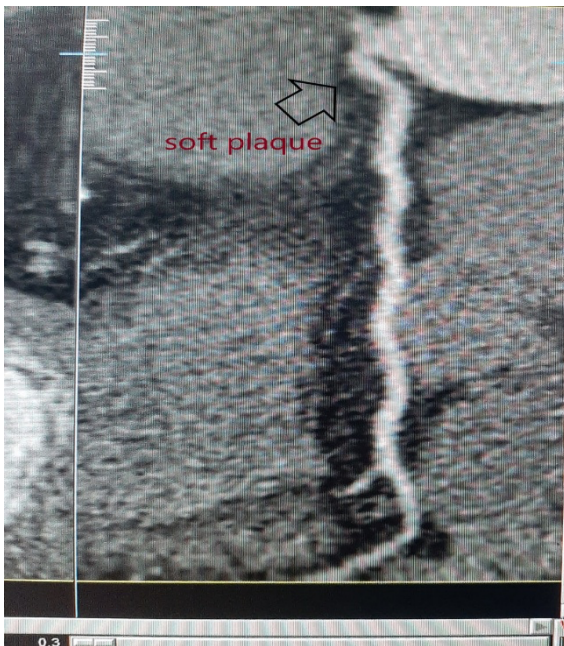
**Supplementary Figure 1.** Multi-detector computed tomography image of epicardial fat volume measurement (green colored area) in the coronal section of the heart.



**Supplementary Figure 2.** Multi-detector computed tomography image of the left anterior descending artery with calcified plaque.



**Supplementary Figure 3. Multi-detector computed tomography image of the left anterior descending artery with mixed plaque.**



**Supplementary Figure 4. Multi-detector computed tomography image of the left anterior descending artery with non-calcified (soft) plaque.**