

SUPPLEMENTARY MATERIAL

Rheumatic conditions associated with interstitial lung diseases: real-world outcomes in a secondary care setting

Alex Francioni,¹ Muhammad K Nisar,² Natasha Ramsundar,¹
Vijay Joshi,¹ Judeson Gnanapragasam¹

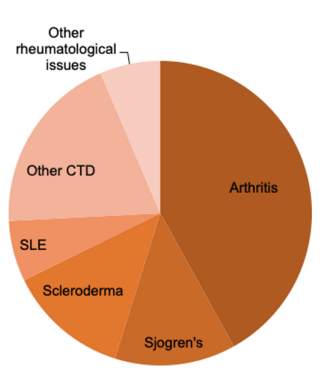
¹Respiratory Department, Luton and Dunstable University Hospital NHSFT, Luton;

²Rheumatology Department, Luton and Dunstable University Hospital NHSFT, Luton,
United Kingdom

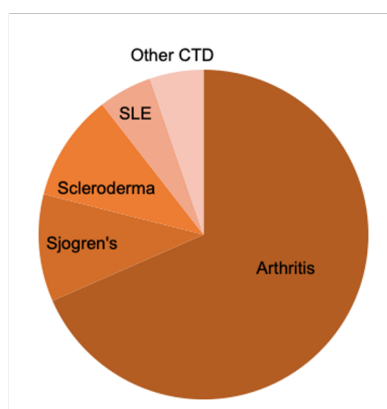
Correspondence: Muhammad K Nisar, Rheumatology Department, Luton and Dunstable
University Hospital, Lewsey Road, Luton, Bedfordshire, LU4 0DZ, United Kingdom.

E-mail: muhammad.Nisar@bedsft.nhs.uk

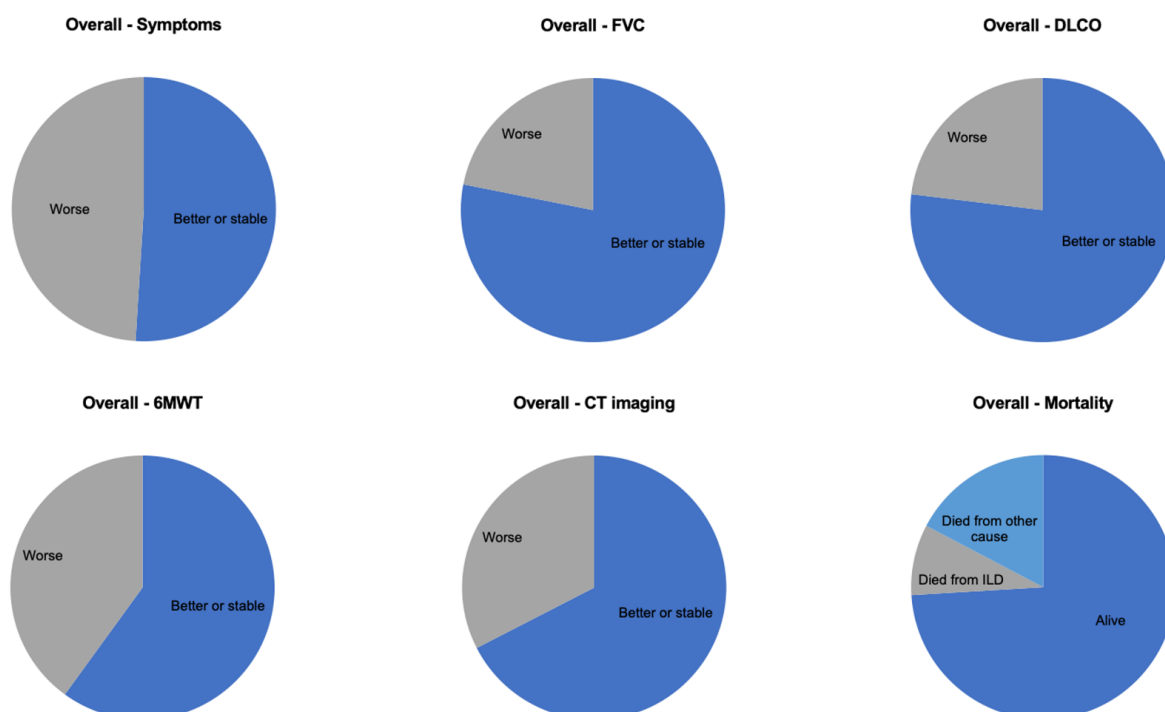
Key words: interstitial lung disease, rheumatic diseases, secondary care.



Supplementary Figure 1. Non-specific interstitial pneumonia patients.

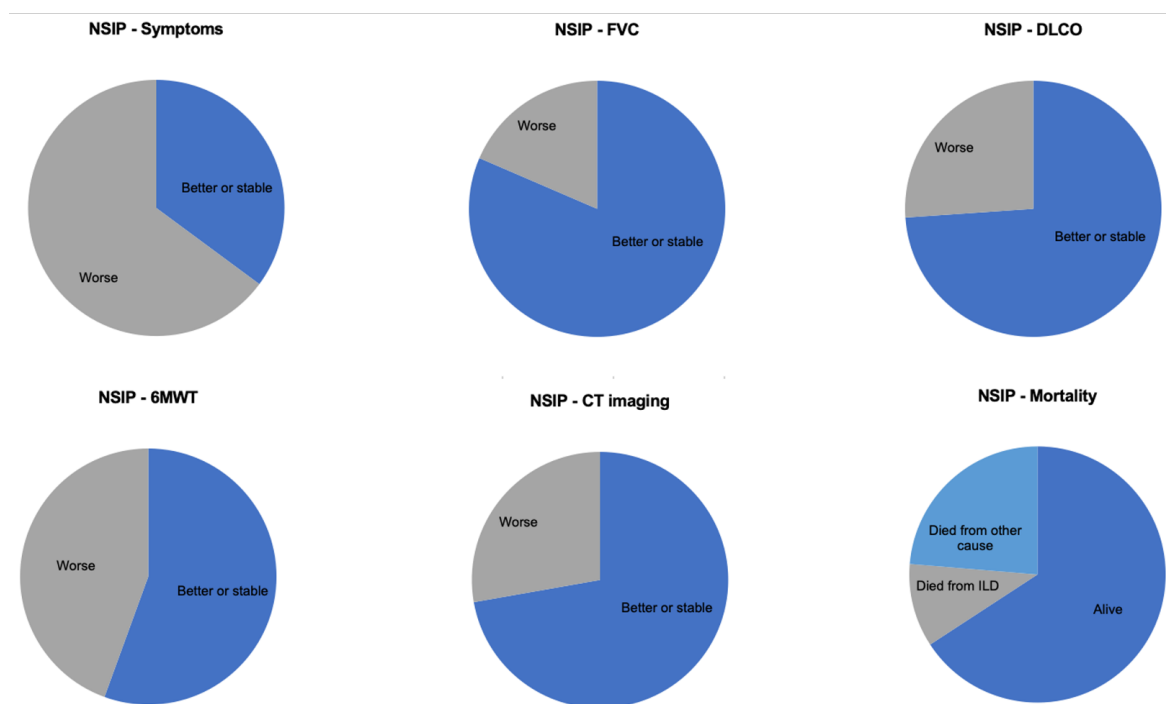


Supplementary Figure 2. Usual interstitial pneumonia patients.

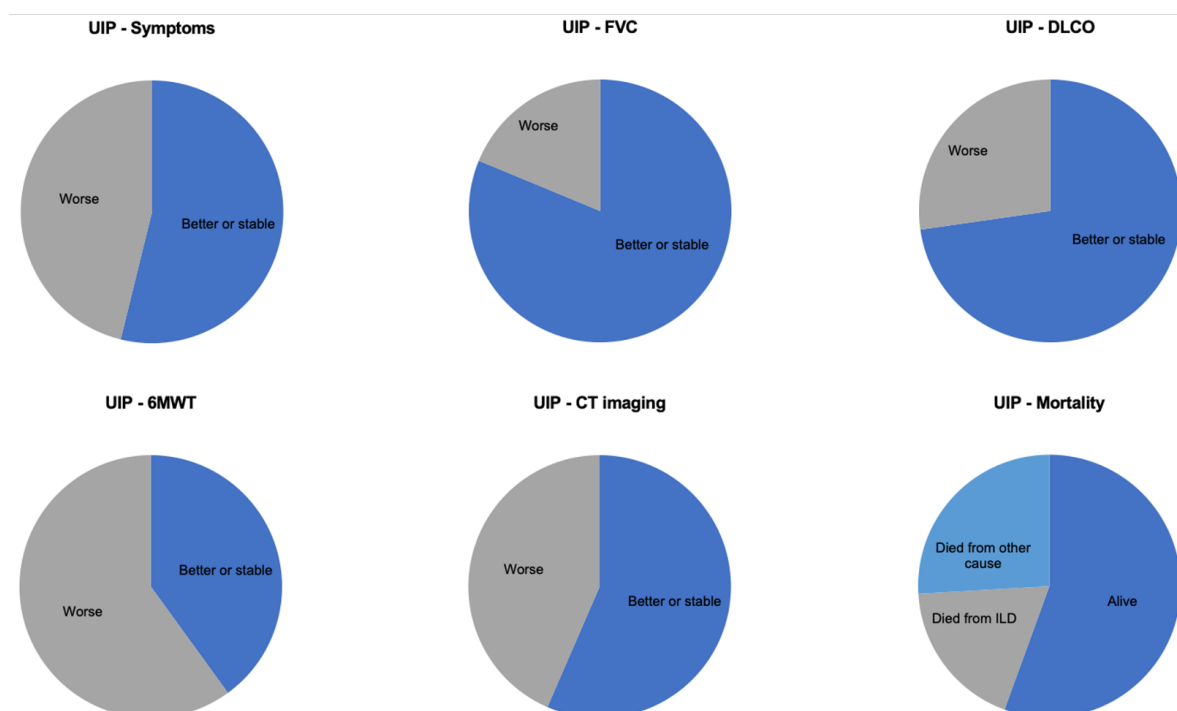


Supplementary Figure 3. Outcomes overall.

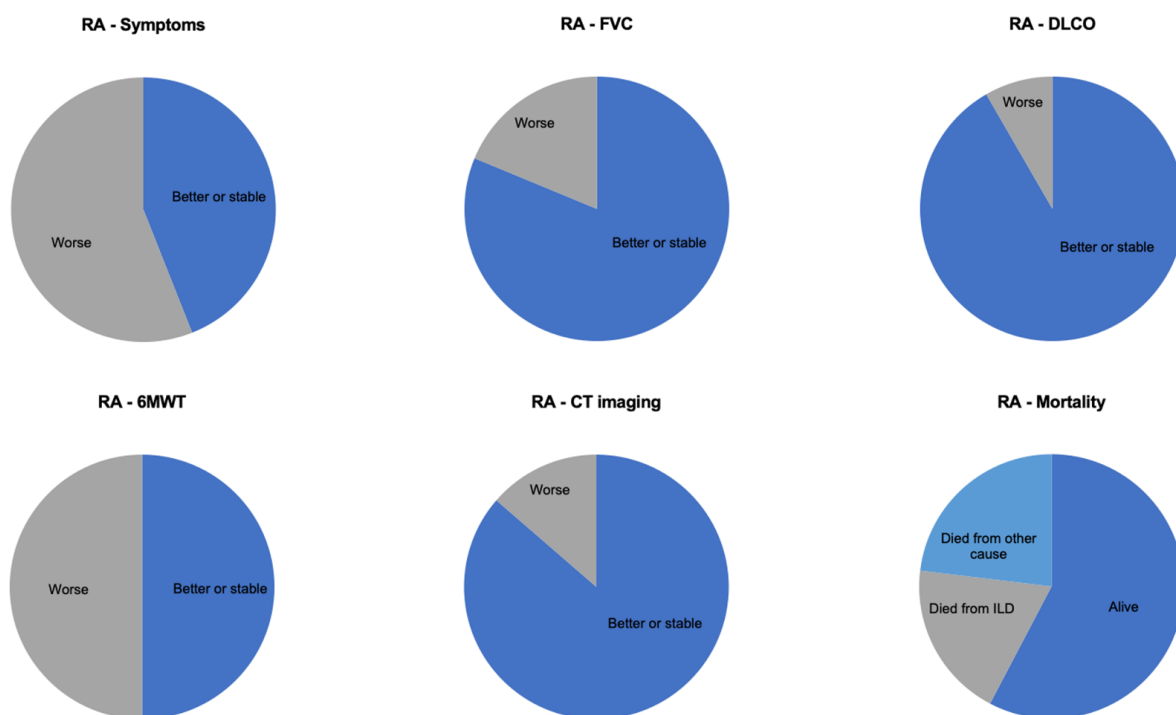
Note: The publisher is not responsible for the content or functionality of any supporting information supplied by the authors. Any queries should be directed to the corresponding author for the article.



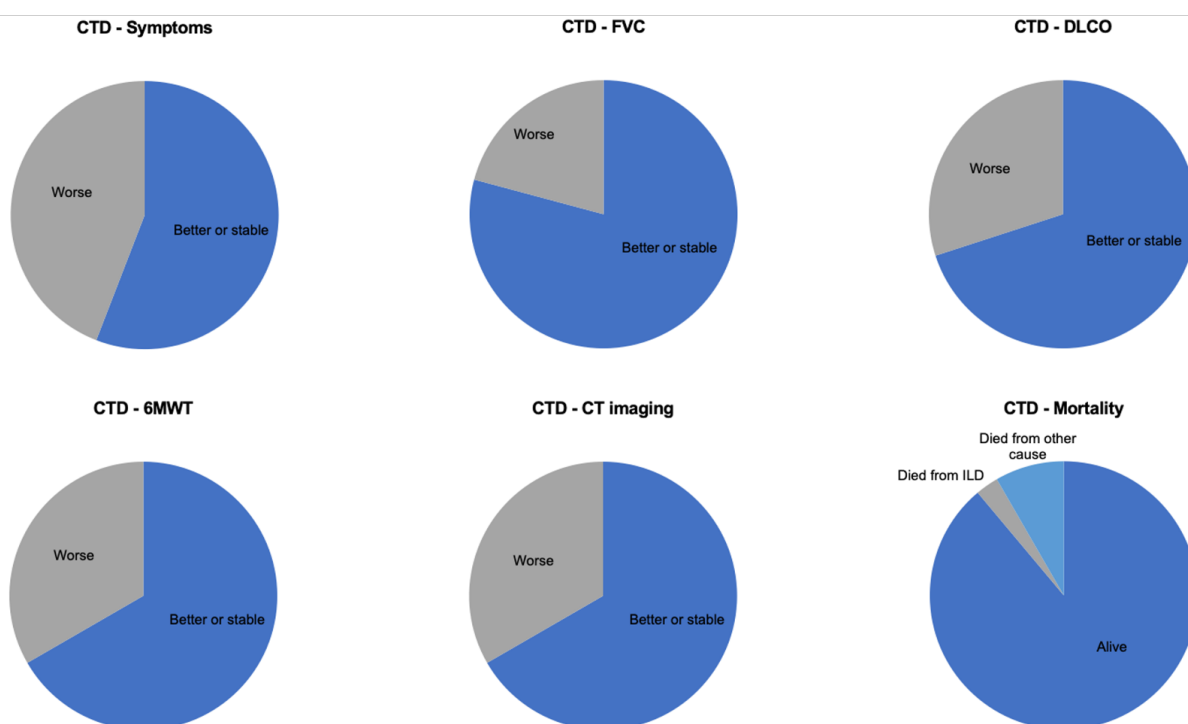
Supplementary Figure 4. Outcomes for patients with non-specific interstitial pneumonia.



Supplementary Figure 5. Outcomes for patients with usual interstitial pneumonia.



Supplementary Figure 6. Outcomes for patients with rheumatoid arthritis.



Supplementary Figure 7. Outcomes for patients with connective tissue diseases.