

Fibrotic outcomes from SARS-CoV-2 virus interstitial pneumonia

Luigi Pinto,¹ Pietro Schino,¹ Michele Bitetto,¹ Ersilia Tedeschi,¹ Michele Maiellari,¹ Giancarlo De Leo,¹ Elena Ludovico,² Giovanni Larizza,³ Franco Mastroianni³

¹Respiratory Physiopathology and Bronchial Endoscopy Unit, Ecclesiastical Entity General Regional Hospital 'F. Miulli', Acquaviva Delle Fonti (BA); ²Radiology Unit, Ecclesiastical Entity General Regional Hospital 'F. Miulli', Acquaviva Delle Fonti (BA); ³Unit of Internal Medicine, Ecclesiastical Entity General Regional Hospital 'F. Miulli', Acquaviva Delle Fonti (BA), Italy

Abstract

Following the onset of the new COVID-19 pandemic, particular attention is paid to the long-term outcomes, especially concerning patients affected by the SARS-CoV-2 virus, leading to interstitial pneumonia. The aim of this research is to evaluate the possible evolution over time of interstitial pneumonia into post-inflammatory fibrosing interstitial disease.

This research included 42 patients admitted to the COVID ward for SARS-CoV-2 interstitial pneumonia, 10 patients with mild pneumonia and respiratory failure who were treated with O₂ only, 32 patients with severe pneumonia in whom O₂ and non-invasive ventilation were used for respiratory assistance, and 4 patients treated with invasive mechanical ventilation. At 70±30 days, 6, 12, 24, and 36 months after discharge, the cohort of patients underwent the evaluation of inflammation indices, high-resolution computed tomography (CT) chest scans, and functional respiratory tests.

The comparative analysis showed that 83.3% of patients had residual parenchymal lung disease at 36-month follow-up, with a significantly higher rate in those with severe pneumonia and more extensive disease on initial CT. Regarding the pulmonary involvement model, patients presented ground-glass opacity or peripheral parenchymal bands, or a combination of them, and peri- and intralobular interstitial thickening, which may be representative of fibrotic interstitial lung disease. There is a correlation between the severity of pneumonia, the inflammatory state, the need to increase respiratory support, and the quantity and persistence of CT-related lesions. Reductions in respiratory functions and exercise capacity were observed, the latter more pronounced in patients (24%) who had contracted severe pneumonia and required ventilatory support. Pulmonary outcomes from SARS-CoV-2 respiratory infections show a wide range of radiological findings, from complete recovery to stable outcomes of thickening and distortion of the interstitial architecture. From a functional point of view, there is an impairment of the alveolar-capillary diffusion capacity and, in cases of those who had contracted severe pneumonia, desaturation and reduced exercise tolerance in 24% of cases at a 36-month follow-up.

Key words: COVID-19 interstitial pneumonia, pulmonary fibrosis.

Correspondence to: Luigi Pinto, Respiratory Physiopathology and Bronchial Endoscopy Unit, Ecclesiastical Entity General Regional Hospital 'F. Miulli', Acquaviva Delle Fonti (BA), Italy.
E-mail: luigi.pinto@miulli.it

Introduction

COVID-19 infection may be asymptomatic or manifest itself as a mild respiratory tract disease, while severe cases may present pneumonia, leading to acute respiratory distress syndrome (ARDS) in approximately 15% of hospitalized patients [1].

Studies have shown that in patients with this disease, once the acute phase had passed and they had recovered from the infection, changes in lung parenchyma and respiratory function were found, raising the question of whether these changes could evolve towards a condition of pulmonary fibrosis [2-4].

The hypothesis of a possible evolution of histopathological changes induced by SARS-CoV-2 infection into fibrosis has already been highlighted in previous coronavirus epidemics. Studies of autopsy findings during the epidemic in 2003 showed

that the predominant lesion pattern was diffuse alveolar damage (DAD) with deposition of hyaline membranes, followed by a cellular proliferative phase including hyperplasia of type II pneumocytes, and a possible organization of DAD with fibroblast proliferation [5,6]. In the recent SARS-CoV-2 pandemic, a study conducted in northern Italy in patients who died of COVID-19 interstitial pneumonia showed that the predominant pattern of lesions was DAD, including hyaline membrane deposition, pneumocyte hyperplasia, and the presence of platelet thrombi and fibrin in small arterial vessels [7,8].

Fibrotic pulmonary changes may result in functional impairment and reduced exercise tolerance. Follow-up studies were conducted for 15 years in healthcare staff who had contracted severe acute respiratory syndrome during the 2003 MERS in which it was shown that approximately 9% of patients had fibrotic lung lesions and that interstitial lung damage and functional decline



recovered within the first two years [9], with a residual percentage showing stable lesions at follow-up until 2018. Also, in a prospective study [10], in infected patients who survived the 2003 epidemic, impaired alveolar capillary spread of cases and reduced exercise capacity were observed in 23.7% of patients.

Materials and Methods

Immediately after the first pandemic phase at our center, follow-up was activated for patients with previous COVID-19 and radiological demonstration of interstitial pneumonia.

Observational study

The inclusion criteria concerned patients who had been hospitalized for interstitial pneumonia and who had received respiratory support based on the severity of the clinical-radiological and functional respiratory grade. The inclusion into the study was based on the collection of clinical, serological, and radiological data performed during hospitalization, with entry into the observational study which included the evaluation of the serological indices erythrocyte sedimentation rate and C-reactive protein, the D-Dimer, the level of interleukin (IL)-6 in the blood, high-resolution chest computed tomography (CT), respiratory functional tests with body plethysmography, diffusion capacity of the lung for carbon monoxide (DLCO), 6-meter walk test. The first check-up took place 70±30 days after discharge (T1). Follow-up then continued at 6 (T2), 12 (T3), 24 (T4), and 36 (T5) months.

A total of 42 patients were selected. The average age was 54.8±16.2 years, 35 men and 7 women who were hospitalized for SARS-CoV-2 interstitial pneumonia. Different levels of severity were considered in the selection criteria. 10 patients have contracted mild pneumonia and respiratory failure requiring only O₂ support (conventional oxygen therapy; high-flow oxygen), 32 had severe pneumonia, according to the World Health Organization (WHO) classification [11], for whom continuous positive airway pressure also non-invasive ventilation, and invasive ventilation with oro-tracheal intubation (4 patients) were required in addition to O₂ support.

Comorbidity was present in 34 patients (81%, Table 1), of whom 6 had chronic respiratory diseases (17.6%): 2 with asthma, 3 with chronic bronchitis, and 1 with bronchiectasis.

CT radiological lesions were identified based on the radiological report and classified according to the following nomenclature into ground-glass opacities (GGO), consolidations, interlobular and intralobular septa thickening, fibrotic striae, and bronchiectasis. The degree of dyspnea was assessed according to Borg's scale [modified Medical Research Council (mMRC)].

The study of respiratory function included: forced expiratory volume in the first second (FEV₁), forced vital capacity (FVC), FEV₁/FVC ratio, total lung capacity (TLC), vital capacity, inspiratory capacity, expiratory reserve volume, airway resistance, and DLCO using the single-breath technique [12]. All respiratory function tests measurements were expressed as absolute values and percentages of predicted normal values. Criteria for the classification of lung function changes were based on American Thoracic Society (ATS) guidelines [13,14], and performed with Jagger Master Screen Body equipment.

The 6-Minute Walk Test (6-MWT) was performed according to ATS guidelines [15]. Dyspnea data, with a mMRC scale, were collected before and after 6 MWT.

After the initial radiological and functional assessment (T1),

according to the degree of extension of the lesions and functional deficit, the patients (except those with a normal radiological pattern) underwent supplementary treatment with only prednisone at a low dose of 5 mg per day for a variable period of 50±10 days. Then they all underwent follow-up at 6 (T2) and 12 (T3), 24 (T4), and 36 (T5) months from the date of admission, with re-evaluation of the indices of inflammation, serum IL-6, high-resolution chest CT, assessment of the degree of dyspnea, respiratory function with global spirometry, DLCO, and 6-MWT.

Statistical analysis

Data are described as mean ± standard deviation or as absolute frequency and percentage. Inter-group averages were compared by means of Student's t-test for independent samples. Categorical variables were compared by Fisher's exact test. A p<0.05 was considered statistically significant.

Results

High-resolution CT of the chest at 70±30 days after discharge showed a normal radiological pattern only in 7 patients (16.7%), all from the first group with O₂-only pneumonia. The radiological lesions still present in the remaining 35 patients (83.3%), of which only 3 were from the first group and all 32 patients were from the second group (Table 1), were represented by GGO combined with interlobular and intralobular septa thickening, fibrotic striae, consolidation, and traction bronchiectasis (Figure 1).

The evaluation of serum IL-6 still showed slightly elevated serum values (6.57±1.4pg/mL) in 10 patients, 2 of whom were in the first group with mild pneumonia (who had presented persistence of radiological lesions) and 8 were in the second group with severe pneumonia (Table 1).

The assessment of the degree of dyspnea according to Borg's scale revealed a grade 1 (mMRC 1) in 20 patients and a grade 2 (mMRC 2) in 22 patients, all of whom had contracted severe pneumonia.

The DLCO values were 74±9% in the form of interstitial pneumonia with O₂ support only, whereas the 32 patients with severe

Table 1. Basic characteristics and co-morbidities of patients.

Gender, n (%)	
Male	35 (83.3)
Female	7 (16.7)
Age	54.8±16.2 years
Mild pneumonia, n (%)	10 (23.8)
Severe pneumonia, n (%)	32 (76.2)
Comorbidity, n (%)	34 (80.9)
Hypertension	15 (44.1)
Diabetes	5 (14.7)
Obesity	4 (11.8)
Respiratory diseases	6 (17.6)
Coronary heart disease	4 (11.8)
Laboratory examinations	
D-dimer	489±200 ng/mL
PCR	4.5±2 mg/L
IL-6	0-5 pg/mL (32 pat.) 6.57±1.4 pg/mL (10 pat.)

PCR, C-reactive protein; IL, interleukin; pat., patients.



forms of pneumonia who received ventilatory support had a deficit of $60\pm 6\%$ of the theoretical value (Table 2).

Exercise tolerance, assessed by means of a 6-minute walking test, revealed a desaturation of less than 90% in 15 patients (40.5%), including 3 with mild pneumonia (17.6%) and 14 with severe interstitial pneumonia (82.3%). A higher number of comorbidities was found in patients with desaturation (Table 3).

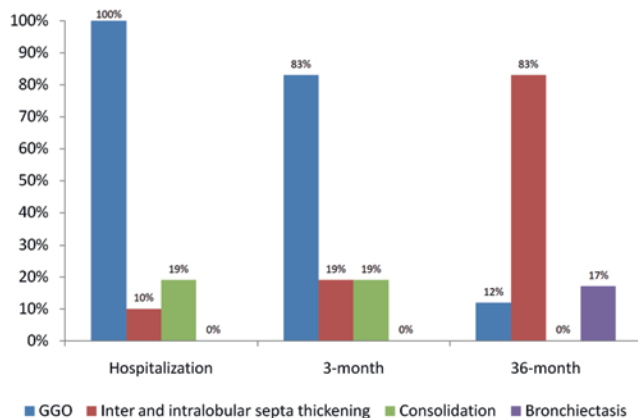


Figure 1. Predominant lesions in high-resolution computed tomography (HRCT) of the chest. After hospitalization at 3 months, the radiological lesions were still present in the remaining 35 patients (83.3%), of which only 3 from the first group (mild pneumonia) and all 32 patients from the second group (severe pneumoniae), were represented by ground-glass opacities (GGO) combined with interlobular and intralobular septa thickening, fibrotic striae, consolidation and traction bronchiectasis. At 36 months, HRCT chest showed resolution of consolidations in all patients, a progressive reduction in the number and extent of the ground-glass opacities that persisted in 4 patients (11.4%) with residual and tenuous subpleural areas, while fibrotic striae, distortion and interstitial reticular thickening persisted in combination in 35 patients (83.3%), traction bronchiectasis in 6 patients (17.1%).

Re-evaluation at 6, 12, 24, and 36 months

The radiological re-evaluation took place on 35 patients, including 3 from the first group and 32 from the second group, who had persistent radiological lesions on T1.

High-resolution CT of the chest (Figure 1) showed resolution of consolidations in all patients, a progressive reduction in the number and extent of the GGO that persisted at 36 months (T5) in 4 patients (11.4%) with residual and tenuous subpleural areas, while fibrotic striae, distortion and interstitial reticular thickening persisted in combination in 35 patients (83.3%), traction bronchiectasis in 6 patients (17.1%) (Figure 1).

The serum IL-6 assays at 6 months (T2) detected slightly elevated values in only 2 of the initial 8 patients, 5.8 ± 0.5 pg/mL. At 12 months (T3) and subsequently in T4 and T5, serum IL-6 values were in the normal range (0-5 pg/mL).

Dyspnea was assessed as grade 1 (mMRC 1) in 15 patients and grade 2 (mMRC 2) in 20 patients. After 24 and 36 months (T4, T5), re-evaluation of CO improved by about $5.4\pm 0.6\%$ in patients with mild pneumonia, and by $6\pm 0.5\%$ in patients with severe pneumonia (Table 2).

The walking test at 24 and 36 months (T4, T5) detected a desaturation $<90\%$ in 10 patients (23.8%), including only 1 patient in the first group with mild pneumonia (10%) and 9 patients (28%) in the second group with severe pneumonia (Table 3).

Discussion

Recent studies of post-COVID-19 radiological patterns, performed immediately after the first pandemic phase, confirm pulmonary fibrotic-type changes in patients who survived severe pneumonia. These changes were associated with advanced age, ARDS, longer hospital stay, and non-invasive mechanical ventilation [16-19].

Among the fibrogenic mechanisms associated with viral infection, the following should be emphasized: the possible viral activation of profibrotic pathways with production of growth factors

Table 2. Diffusion capacity of the lung for carbon monoxide: functional data.

	Total	Mild pneumonia	Severe pneumonia	p
	42	10	32	
DLCO% predicted				
70±30 days after discharge		74±9%	60±6%	<0.001
After 24 months		5.4±0.6%	6±0.5%	0.003
KCO% predicted		76-82%	65-75%	

DLCO, diffusion capacity of the lung for carbon monoxide; KCO, carbon monoxide transfer coefficient %predicted.

Table 3. Functional data of the 6-Minute Walk Test.

	Total	Mild pneumonia	Severe pneumonia	p
	42	10	32	
6-MWT Sat<90%				
70±30 days after discharge	17 (40%)	3 (30%)	14 (44%)	0.490
After 24 and 36 months (23.8%)	10 (24%)	1 (10%)	9 (28%)	0.404
Comorbidity		1-3	1-4	

6-MWT, 6-Minute Walk Test; Sat, saturation.



fibroblast growth factors, epidermal growth factors, transforming growth factor- β [20,21]; cytokine-induced damage [22]; direct cellular damage of the virus on alveolar type II cells on macrophages and endothelial cells [22,23]; lesions induced by mechanical ventilation; the patient's age.

Therefore, based on these clinical-physiopathological premises, a functional respiratory and radiological follow-up was conducted in discharged patients diagnosed with SARS-CoV-2 interstitial pneumonia who presented interstitial pneumonia with respiratory failure and severe pneumonia according to the WHO classification.

The first assessment involved thoracic radiological imaging with a high-resolution chest CT scan and comparison with the radiological investigation performed on admission.

At 70 \pm 30 days after discharge, radiological abnormalities persisted in 35 patients (83.3%), with a prevalence in those who had developed severe pneumonia. Although pulmonary involvement continued with progressive resorption of lesions by resolution of edema and cellular infiltration, after approximately 6, 12 and 24, and 36 months, radiological abnormalities persisted with GGO, striae, and subpleural parenchymal bands, thickening, and distortion of the interstitial architecture. Laboratory results also showed, at an early stage, and only in a portion of patients, higher levels of IL-6, D-dimer, and PCR. Serum IL-6 assays then returned to normal in all patients, reflecting resolution of the acute inflammatory process.

Other baseline studies using generalized linear models have found that basal IL-6 levels could be proposed as predictors of medium/long-term radiological sequelae after COVID-related interstitial pneumonia [24,25]. Our results are consistent at least in the early T1 and T2 phases for a portion of patients.

Other studies evaluated the potential use of serum nucleocapsid antigen (NAg) and Krebs von den Lungen-6 (KL-6) glycoprotein as biomarkers of COVID-19 and their correlation with clinical, radiological, and biochemical parameters [26-29]. Elevated levels of these biomarkers were coherent with increased inflammation, interstitial lung damage, and more severe clinical manifestations, thus supporting the hypothesis of their link to interstitial lung diseases, *e.g.*, idiopathic pulmonary fibrosis, nonspecific interstitial pneumonia.

We believe that in the persistence of long-term radiological sequelae, especially in patients with severe pneumonia who had required greater respiratory support, in addition to the action of interleukin 6, NAg and KL-6, other factors such as growth factors and injuries induced by mechanical ventilation may be decisive [30].

The degree of dyspnea, assessed through the Borg's scale, after 2 years of the disease, persisted at grades 1 and 2, as well as the severity of the disease, which could also reflect the contribution of steroids to viral myopathy through various mechanisms, such as the long period of inactivity and alterations in protein synthesis.

The evidence on pulmonary function tests after discharge and at 24 months shows a reduction in FVC, reduction in TLC, DLCO, and 6-MWT, with prevalence in patients who had contracted severe pneumonia compared to patients with pneumonia (Table 2).

Focusing on DLCO, its stable deficit as shown by other shorter follow-up studies on COVID-19 [10], but also longer follow-ups during MERS and SARS [9], persists at <80% in all patients (83.3%) who had contracted severe pneumonia.

The exercise tolerance assessment conducted in other studies on a smaller number of patients and immediately at discharge showed desaturation in 50% of the patients [31,32]. In our work,

after 36 months, 10 patients (23.9%) had desaturation <90% during WT, of whom 9 with severe pneumonia and used ventilation, all with alveolus-capillary diffusion deficits, confirming a stable alteration in gas exchange due to damage at the level of the alveolus-capillary barrier. Our data therefore highlight that there is a correlation between the severity of pneumonia, the inflammatory state, the type of respiratory support received, the quantity and persistence of CT-related lesions, with a greater number of patients with functional deficit.

Conclusions

Our studies indicate that in a significant number of patients (83.3%) who contracted SARS-CoV-2 interstitial pneumonia, although there is a progressive resorption of the lesions expressed as inhomogeneities and/or consolidations, there is persistence, even after 36 months, of thickening and distortion of the interstitial architecture. The persistence of lesions is prevalent in relation to the initial severity of pneumonia, with greater infiltration, and to the type of respiratory support received. Alterations in gas exchange and reduced exercise tolerance are present in approximately 24% of patients, especially those with severe pneumonia, outlining a picture of COVID-19-related post-inflammatory lung interstitial disease.

References

- Pfortmueller CA, Spinetti T, Urman RD, et al. COVID-19-associated acute respiratory distress syndrome (CARDS): Current knowledge on pathophysiology and ICU treatment – a narrative review. *Best Pract Res Clin Anaesthesiol* 2021;35: 351-68.
- Spagnolo P, Balestro E, Aliberti S, et al. Pulmonary fibrosis secondary to COVID-19: a call to arms? *Lancet Respir Med* 2020;8:750-2.
- Tannia SE, Todorovic Fabrob A, de Albuquerque A, et al. Pulmonary fibrosis secondary to COVID-19: a narrative review. *Expert Rev Respir Med* 2021;15:791-803.
- Huang W, Wu Q, Chen Z, et al. The potential indicators for pulmonary fibrosis in survivors of severe COVID-19. *J Infect* 2021;82:e5-7.
- Franks TJ, Chong P, Chui P, et al. Lung pathology of severe acute respiratory syndrome (SARS): a study of 8 autopsy cases from Singapore. *Hum Pathol* 2003;34:743-8.
- Hwang DM, Chamberlain DW, Poutanen SM, et al. Pulmonary pathology of severe acute respiratory syndrome in Toronto. *Mod Pathol* 2005;18:1-10.
- Carsana L, Sonzogni A, Nasr A, et al. Pulmonary post-mortem findings in a series of COVID-19 cases from northern Italy: a two-centre descriptive study. *Lancet Infect Dis* 2020;20:1135-40.
- Ackermann M, Verleden SE, Kuehnel M, et al. Pulmonary vascular endothelialitis, thrombosis, and angiogenesis in covid-19. *N Engl J Med* 2020;383:120-8.
- Zhang P, Li J, Liu H, et al. Long-term bone and lung consequences associated with hospital-acquired severe acute respiratory syndrome: a 15-year follow-up from a prospective cohort study. *Bone Res* 2020;8:8.
- Hui DS, Wong KT, Ko FW, et al. The 1-year impact of severe acute respiratory syndrome on pulmonary function, exercise



- capacity, and quality of life in a cohort of survivor. *Chest* 2005;128:2247-61.
11. World Health Organization. Clinical management of severe acute respiratory infection when COVID-19 is suspected. Available from: <https://iris.who.int/handle/10665/331446>.
 12. Graham BL, Brusasco V, Burgos F, et al. 2017 ERS/ATS standards for single-breath carbon monoxide uptake in the lung. *Eur Respir J* 2017;49:1600016.
 13. Wanger J, Clausen JL, Coates A, et al. Standardization of the measurement of lung volumes. *Eur Respir J* 2005;26:511-22.
 14. Graham B, Steenbruggen I, Miller M, et al. Standardization of spirometry 2019 update. An official American Thoracic Society and European Respiratory Society technical statement. *Am J Respir Crit Care Med* 2019;200:e70-88.
 15. ATS Committee on Proficiency Standards for Clinical Pulmonary Function Laboratories. ATS statement: guidelines for the six-minute walk test. *Am J Respir Crit Care Med* 2002;166:111-7
 16. Ye T, Fan Y, Liu J, et al. Follow-up Chest CT findings from discharged patients with severe COVID-19: an 83-day observational study. Available from: <https://doi.org/10.21203/rs.3.rs-27359/v1>.
 17. Tobatabaei SMH, Rajebi H, Moahaddas F, et al. Chest CT in COVID-19 pneumonia: what are the findings in mid-term follow-up? *Emerg Radiol* 2020;27:711-9.
 18. Han X, Fan Y, Alwalid O, et al. Six-month follow-up chest CT findings after severe COVID-19 pneumonia. *Radiology* 2021;299:E177-86.
 19. Lei P, Fan B, Mao J, et al. The progression of computed tomographic (CT) images patients with coronavirus disease (COVID-19) pneumonia. *J Infect* 2020;80:e30-1.
 20. Tharoux PL, Chatziantoniou C, Fakhouri F, Dussaule JC. Angiotensin II activates collagen I gene through a mechanism involving the MAP/ER kinase pathway. *Hypertension* 2000;36:330-6.
 21. Costela-Ruiz VJ, Illescas-Montes R, Puerta-Puerta JM, et al. SARS-CoV-2 infection: the role of cytokines in COVID-19 disease. *Cytokine Growth Factor Rev* 2020;54:62-75.
 22. Barkauskas CE, Cronic MJ, Rackley CR, et al. Type 2 alveolar cells are stem cells in adult lung. *J Clin Invest* 2013;123:3025-36.
 23. Winters NI, Burman A, Kropski JA, Blackwell TS. Epithelial injury and dysfunction in the pathogenesis of idiopathic pulmonary fibrosis. *Am J Med Sci* 2019;357:374-8.
 24. Herold T, Jurinovic V, Arnreich C, et al. Level of IL-6 predicts respiratory failure in hospitalized symptomatic COVID-19 patients. *MedRxiv* 2020. Available from: <https://doi.org/10.1101/2020.04.01.20047381>.
 25. Toraldo DM, Satriano F, Rollo RR, et al. COVID-19 IgG/IgM patterns, early IL-6 elevation and long-term radiological sequelae in 75 patients hospitalized due to interstitial pneumonia followed up from 3 to 12 months. *PLoS One* 2021;17:e0262911.
 26. Zamparelli SS, Fucci V, Rea G, et al. The role of SARS-CoV-2 nucleocapsidic antigen and Krebs von den Lungen6 serum levels in predicting COVID-19 pneumonia outcome. *Diagnostics* 2024;14:642.
 27. Lee JS, Lee EY, Ha YJ, et al. Serum KL-6 levels reflect the severity of interstitial lung disease associated with connective tissue disease. *Arthritis Res Ther* 2019;21:58.
 28. D'Alessandro M, Cameli P, Refini RM, et al. Serum KL-6 concentrations as a novel biomarker of severe COVID-19. *J Med Virol* 2020;92:2216-20.
 29. Scotto R, Pinchera B, Perna F, et al. Serum KL-6 could represent a reliable indicator of unfavourable outcome in patients with COVID-19 pneumonia. *Int J Environ Res Public Health* 2021;18:2078.
 30. Cabrera-Benitez NE, Laffey JG, Perotto M, et al. Mechanical ventilation-associated lung fibrosis in acute respiratory distress syndrome. *Anesthesiology* 2014;121:189-9.
 31. Anastasio F, Barbuto S, Scarnecchia E, et al. Medium term impact of COVID19 on pulmonary function, capacity and quality of life. *Eur Respir J* 2021;58:2004015.
 32. Mo X, Jia W, Su Z, et al. Abnormal pulmonary function in COVID-19 patients at time of hospital discharge. *Eur Respir J* 2020;55:2001217.

Received: 18 April 2024; Accepted: 9 September 2024; Early view: 16 October 2024.

Contributions: all the authors made a substantial intellectual contribution, read and approved the final version of the manuscript and agreed to be accountable for all aspects of the work.

Conflict of interest: the authors declare that they have no conflict of interest.

Ethics approval and consent to participate: the research was conducted in accordance with the World Medical Association Declaration of Helsinki. Approval 6439 of 04/17/2020 Interregional Ethics Committee of the Bari Polyclinic.

Patient consent for publication: all patients gave consent for the use of data for scientific publication.

Availability of data and materials: data and materials are available from the corresponding author upon request.

Acknowledgments: the authors thank the Respiratory Physiopathology technicians, L. Battista, D. Ciquera, N. Colafemmina, L. Frizzale, P. Galetta, and N. Panzarea, for performing the investigations during the 3-year follow-up and Dr. P. Guida for the statistical analysis.

Publisher's note: all claims expressed in this article are solely those of the authors and do not necessarily represent those of their affiliated organizations, or those of the publisher; the editors and the reviewers. Any product that may be evaluated in this article or claim that may be made by its manufacturer is not guaranteed or endorsed by the publisher.

This work is licensed under a Creative Commons Attribution-NonCommercial 4.0 International License (CC BY-NC 4.0).

