

# Differences in nutritional status of patients with chronic obstructive pulmonary disease between Mediterranean and non-Mediterranean regions in Croatia

Davorka Muršić,<sup>1</sup> Tajana Jalušić Glunčić,<sup>1</sup> Jelena Ostojić,<sup>1</sup> Sanda Škrinjarić Cincar,<sup>2</sup> Ljiljana Bulat Kardum,<sup>3</sup> Martina Dokoza,<sup>4</sup> Nataša Karamarković Lazarušić,<sup>5</sup> Erim Bešić,<sup>6</sup> Miroslav Samaržija,<sup>1,7</sup> Andrea Vukić Dugac<sup>1,7</sup>

Correspondence: Andrea Vukić Dugac, School of Medicine, University of Zagreb, 10 000 Zagreb, Croatia.  
E-mail: adugac71@gmail.com

Key words: nutritional status, chronic obstructive pulmonary disease, bioelectrical impedance, obesity, Mediterranean region, continental region.

Contributions: AVD, was the principal investigator and responsible for the final content of the manuscript; AVD, MS, TJG, conceptualized the study; DM, AVD, wrote the manuscript; DM, TJG, JO, SSC, LJBK, MD, NKL, AVD, conducted research; TJG, JO, SSC, LJBK, MD, NKL, AVD, carried out data collection; EB, performed statistical analysis; MS, provided expertise and scientific consultation throughout the research project and/or during manuscript preparation. All authors read and approved the final manuscript.

Conflict of interest: the authors declare there are no competing interests.

Ethics approval and consent to participate: the study protocol was approved by the Ethical Review Committee of the University of University Hospital Centre Zagreb (ID 02/18 AG) as well as by the Ethical Committee of the University Hospital Centre Rijeka, the University Hospital Centre Osijek and Zadar General Hospital.

Informed consent: written informed consent was obtained from a legally authorized representative(s) for anonymized patient information to be published in this article. The manuscript does not contain any individual person's data in any form.

Patient consent for publication: not applicable.

Funding: none.

Availability of data and materials: the data used to support the findings of this study are available from the corresponding author upon request.

Received: 16 June 2023.

Accepted: 29 August 2023.

Early view: 13 September 2023.

Publisher's note: all claims expressed in this article are solely those of the authors and do not necessarily represent those of their affiliated organizations, or those of the publisher, the editors and the reviewers. Any product that may be evaluated in this article or claim that may be made by its manufacturer is not guaranteed or endorsed by the publisher.

©Copyright: the Author(s), 2023

Licensee PAGEPress, Italy

Monaldi Archives for Chest Disease 2024; 94:2667

doi: 10.4081/monaldi.2023.2667

This article is distributed under the terms of the Creative Commons Attribution-NonCommercial International License (CC BY-NC 4.0) which permits any noncommercial use, distribution, and reproduction in any medium, provided the original author(s) and source are credited.

<sup>1</sup>University Hospital Centre Zagreb, Clinic for Lung Diseases Jordanovac, Zagreb; <sup>2</sup>Faculty of Medicine, University of Osijek; <sup>3</sup>Department of Pulmonology, Clinical Hospital Centre Rijeka; <sup>4</sup>Department of Internal Medicine, Zadar General Hospital; <sup>5</sup>Polyclinic for the Respiratory Tract Diseases, Zagreb; <sup>6</sup>Faculty of Pharmacy and Biochemistry, University of Zagreb; <sup>7</sup>School of Medicine, University of Zagreb, Croatia

## Abstract

The nutritional status of patients with chronic obstructive pulmonary disease (COPD) is a significant factor that influences the prognosis of the disease. This observational study aimed to analyze the nutritional status of COPD patients and assess the associations between nutritional status, disease severity, and exercise capacity in four different regions of Croatia. In this multicenter study, 534 COPD patients were recruited and evaluated concerning fat-free mass (FFM), FFM index (FFMI), skeletal muscle mass index (SMMI), phase angle (PhA), pulmonary function tests, and the 6-minute walk test (6MWT). There were 325 (60.9%) male and 209 (39.1%) female patients with a mean age of 66.7±8.4 years. Most patients (73.2%) exhibited a moderate to severely abnormal obstructive pattern and had a reduced 6MWT distance (396.5±110.8 m). Among the participants, 32.8% were overweight and 22.3% were obese, and they had satisfactory values for nutritional status variables (FFM, FFMI, SMMI, PhA). There were no statistical differences between the centers in terms of nutritional status variables. There was a significantly positive correlation of forced expiratory volume in one second with body mass index (BMI) ( $r=0.148$ ,  $p=0.001$ ), PhA ( $r=0.256$ ,  $p=0.00$ ), FFM ( $r=0.365$ ,  $p=0.00$ ), and SMMI ( $r=0.238$ ,  $p=0.00$ ). However, there was no significant correlation of the 6MWT with BMI ( $r=-0.049$ ,  $p=0.254$ ), FFM ( $r=0.065$ ,  $p=0.133$ ), and SMMI ( $r=-0.007$ ,  $p=0.867$ ). The data analysis demonstrated that our patients were not underweight and that there was no significant difference between the centers in terms of BMI, FFM, FFMI, SMMI, and PhA. This lack of significant difference was observed even though one of the regions studied was Mediterranean.

## Introduction

Chronic obstructive pulmonary disease (COPD) is a preventable and treatable condition, and it ranks as one of the three most common causes of death globally [1,2]. The worldwide burden of COPD is expected to increase due to continued exposure to COPD risk factors and the aging of the population [3]. Although

COPD has traditionally been associated with malnutrition and depletion of muscle mass, the prevalence of obesity in COPD patients has been reported to range between 18-54%. Notably, an increase in the prevalence of higher body weight has been observed in the earlier stages of the disease [4-7].

Existing nutrition screening and assessment tools that consider only body mass index (BMI) may overlook important changes in body composition, leading to incomplete management of COPD patients [8-10]. Bioelectrical impedance analysis (BIA) is a widely used method for evaluating body composition in patients with COPD. Raw BIA variables, such as phase angle (PhA), provide information on the water distribution between intracellular and extracellular compartments and, therefore, offer insights into body cell mass and cellular integrity. COPD patients with malnutrition or sarcopenia are characterized by an increased extracellular/intracellular water ratio, with a concomitant decrease in body cell mass. Very low values of PhA ( $<4.2^\circ$ ) are likely to indicate a significantly higher risk of poor nutritional status and mortality in COPD patients [11]. Fat-free mass index (FFMI) is significantly correlated with exercise capacity, dyspnoea, spirometry results [forced expiratory volume in one second (FEV<sub>1</sub>)] and can help estimate the burden of COPD [12]. Nutritional depletion in COPD is a known and complex problem, presenting with several different characterizable phenotypes. These phenotypes are, to varying degrees, associated with increased healthcare use, reduction in functional capacity, and poorer clinical outcomes [13,14].

The traditional Mediterranean diet is characterized by a high intake of vegetables, fruits, nuts, unrefined cereals, olive oil, and fish, along with a low intake of saturated fats and meat. This contrasts with the regular Continental diet. A Mediterranean-like diet is described as inversely associated with the development of COPD [15,16]. The aim of this study was to assess the nutritional status of COPD patients and to investigate the association between nutritional status, disease severity, and exercise capacity in four different regions of Croatia. Since a significant part of Croatia is Mediterranean, we expected to find a difference in the nutritional status of patients from the Mediterranean region compared to

patients from other regions of the country. This assumption was based on the expectation that the Mediterranean diet is still prevalent in the Mediterranean region of Croatia.

## Materials and Methods

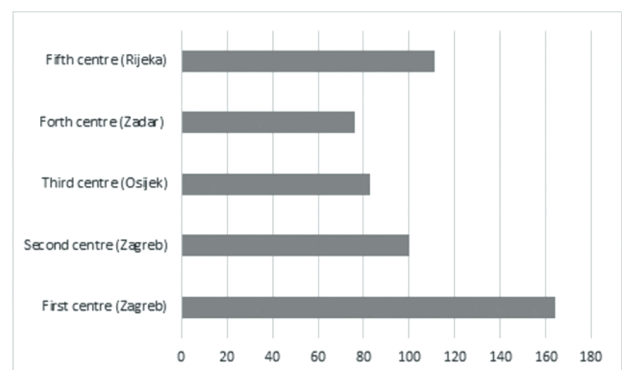
### Patients

This was an observational, multicenter study involving a total of 534 patients with COPD who were recruited and evaluated in 2018 and 2019. The patients' assessments included body composition measurements obtained through BIA: fat-free mass (FFM), FFMI, skeletal muscle mass index (SMMI), and PhA. Additionally, the following measurements were performed: pulmonary function tests (spirometry, diffusing capacity of the lung for carbon monoxide) and the 6-minute walking test (6MWT). Five different centers participated in this study: two from the Mediterranean region and three from continental Croatia (Figure 1).

The Ethics Committees approved the study protocol. All participants provided signed informed consent. COPD diagnosis was made as recommended by the 2019 Global Initiative for Chronic Obstructive Lung Disease (GOLD) guidelines [1]. Patients with a history suggestive of asthma or positive bronchodilator tests were excluded from the study. Additionally, patients with musculoskeletal, neurological, or other diseases that could impact the results of the 6MWT were also excluded.

### Respiratory tests

Spirometry and the diffusing capacity of the lung for carbon monoxide were performed according to the American Thoracic Society (ATS)/European Respiratory Society (ERS) standards. The 6MWT was conducted in accordance with the ATS/ERS statement [17]. Body composition measurements were taken using the TANITA MC-780MA P, utilizing the eight-contact electrode method, as per the manufacturer's instructions and as recommended by Kyle *et al.* [18].



**Figure 1.** Location and number of patients from each center (Rijeka and Zadar from the Mediterranean, Osijek and Zagreb from non-Mediterranean regions in Croatia).

## Statistical analysis

Statistical analysis was performed using the Minitab 19 and Social Science Statistics software packages. Parametric tests were used for the analysis of data with a normal distribution, and nonparametric tests were used for the analysis of data without a normal distribution. In comparisons between groups, if variables were gender-sensitive, they were analyzed separately by sex. In the analysis, the Kruskal-Wallis test, one-way and two-way analysis of variance tests, and the Spearman correlation test were also used. A p-value (2-sided) of  $<0.05$  was considered to indicate a statistically significant difference in all comparisons.

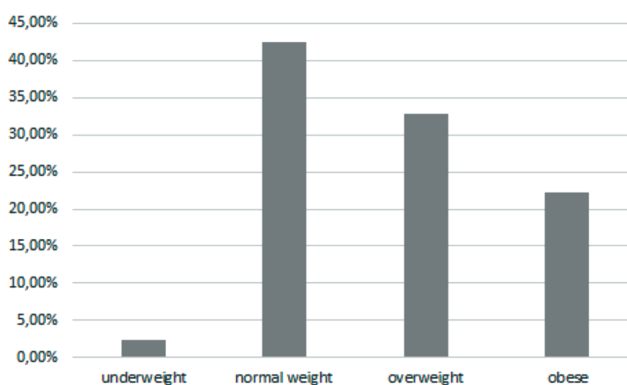
## Results

There were 325 (60.9%) male and 209 (39.1%) female patients, with a mean age of  $66.7 \pm 8.4$  years. A small percentage of patients were underweight (2.4%) while most patients were overweight (32.8%) and obese (22.3%) (Figure 2). Only 3.1% of males had FFMI lower than  $16 \text{ kg/m}^2$ , while FFMI was lower than  $15 \text{ kg/m}^2$  in 3.8% of females. SMMI was lower than  $7 \text{ kg/m}^2$  in 11.7% of males and lower than  $5.7 \text{ kg/m}^2$  in 8.1% of females. All patients were grouped according to the GOLD classification groups, with most patients in groups B, II, and III (Figures 3 and 4). The average FVC was  $3.20 \pm 0.9 \text{ L}$  for males and  $2.42 \pm 0.7 \text{ L}$  for females; FEV<sub>1</sub> was  $1.60 \pm 0.7 \text{ L}$  for males and  $1.30 \pm 0.6 \text{ L}$  for females; diffusing capacity of lung for carbon monoxide was  $57.56 \pm 20.9\%$ ; and the 6MWT result was  $396.5 \pm 110.8 \text{ m}$ , with a significant statistical difference observed between centers (Table 1). The BMI was  $26.3 \pm 5.5 \text{ kg/m}^2$ ; FFM was  $61.8 \pm 10 \text{ kg}$  for males and  $46 \pm 8.3 \text{ kg}$  for females; FFMI was  $20.6 \pm 2.8 \text{ kg/m}^2$  for males and  $18.6 \pm 3.1 \text{ kg/m}^2$  for females; SMMI was  $8.2 \pm 1.4 \text{ kg/m}^2$  for males and  $6.9 \pm 1 \text{ kg/m}^2$  for females; and PhA was  $6 \pm 1.8^\circ$  for males and  $5.6 \pm 1.7^\circ$  for females. There was no statistical difference between centers in these measurements (Table 1). The most common comorbidities among all patients were arterial hypertension (47.6%), gastroesophageal reflux disease (12.4%), coronary heart disease (9%), osteoporosis (8%) and diabetes mellitus (7.5%). There was significant positive correlation of FEV<sub>1</sub> with BMI ( $r=0.148$ ,  $p=0.001$ ), PhA ( $r=0.256$ ,  $p=0.00$ ), FFM ( $r=0.365$ ,  $p=0.00$ ), SMMI ( $r=0.238$ ,  $p=0.00$ ), but no significant correlation of 6MWT with BMI ( $r= -0.049$ ,  $p=0.254$ ), FFM ( $r=0.065$ ,  $p=0.133$ ) or SMMI ( $r= -0.007$ ,  $p=0.867$ ).

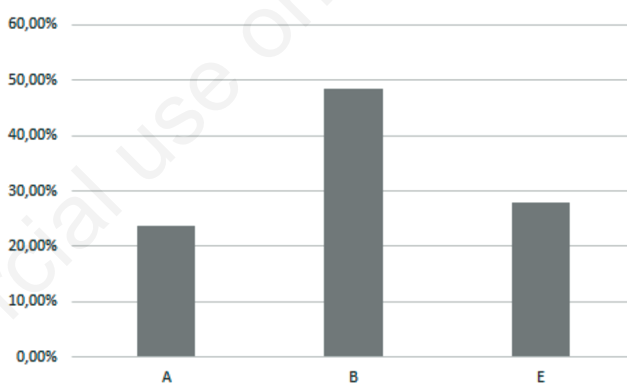
## Discussion

Over the past four decades, we have transitioned from a world in which the prevalence of underweight was more than twice that of obesity to one in which more people are obese than underweight [19]. About 25.3% of men and about 34.1% of women in Croatia are considered obese [20,21]. It can be assumed that this is the reason why patients in our study, on average, did not have a lower BMI and why there was no significant difference between centers with regard to BMI. We can speculate that the Mediterranean diet was not adhered to in our Mediterranean regions. In our study, the average values of FFM, FFMI, SMMI, and PhA were satisfactory, and there were no differences between the centers. Contrary to previous results, the patients in this study with elevated BMI values continued to have satisfactory FFM, FFMI, SSMI, and PhA [8,9].

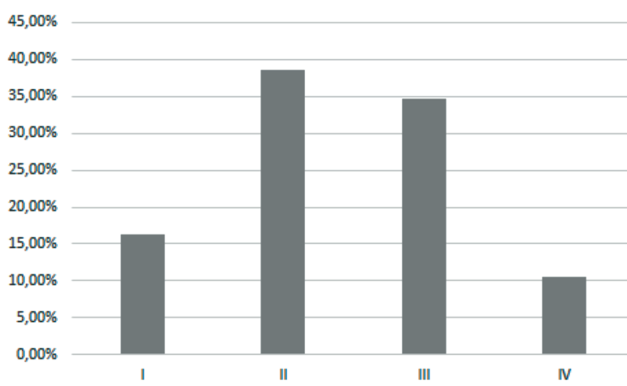
More than 50% of Croatian COPD patients analyzed in this study are men, older than 65 years, and classified in GOLD group B, which is similar to other patients analyzed in earlier studies elsewhere [22-



**Figure 2.** Percentage of body mass index groups in all patients - underweight (under  $18.5 \text{ kg/m}^2$ ), normal weight ( $18.5$  to  $24.9 \text{ kg/m}^2$ ), overweight ( $25$  to  $29.9 \text{ kg/m}^2$ ), and obese (over  $30 \text{ kg/m}^2$ ).



**Figure 3.** Percentage of the new Global Initiative for Chronic Obstructive Lung Disease classification groups in all patients - A, B and E (former C and D).



**Figure 4.** Percentage of Global Initiative for Chronic Obstructive Lung Disease categories according to severity of airflow limitation in all patients - I (mild): forced expiratory volume in one second (FEV<sub>1</sub>)  $\geq 80\%$  predicted; II (moderate): FEV<sub>1</sub> 50-79% predicted; III (severe): FEV<sub>1</sub> 30-49% predicted; and IV (very severe): FEV<sub>1</sub>  $<30\%$  predicted.

**Table 1.** Results of demographic analysis, pulmonary function test, bioelectrical impedance analysis, and 6-minute walk test and comparison between centers.

	First center (n=164)	Second center (n=100)	Third center (n=83)	Fourth center (n=76)	Fifth center (n=111)	All (n=534)	p-value
Age (years)	64.56±8.56	67.73±8.93	65.78±8.1	68.75±7.04	67.98±8.02	66.65±8.37	0.000
Pack years (median)	40	50	35	40	43	40	0.004
FVC (L)	2.76	3.29	2.65	2.75	2.58	2.81±0.83	0.000
FEV <sub>1</sub> (%)	51.59	61.31	59.36	55.06	55.76	55.87±21.56	0.005
FEV <sub>1</sub> (L)	1.357	1.501	1.517	1.441	1.485	1.45±0.63	0.000
FEV <sub>1</sub> /FVC (%)	50.50	45.42	56.00	51.47	55.49	51.49±15.48	0.000
DLCO (%)	52.23	56.88	61.86	63.53	57.25	57.56±20.86	0.002
6MWD (m)	393.0	419.9	371.4	466.8	351.0	396.53±110.83	0.000
BMI (kg/m <sup>2</sup> )	26.56±5.62	26.25±5.62	27.18±5.35	26.37±5.48	25.52±5.10	26.36±5.46	0.313
FFM (kg)							
Male	61.83	62.55	61.034	61.64	61.68	61.80±10.04	0.971
Female	45.43	45.05	8.07	46.31	46.23	46.04±8.34	0.565
FFMI (kg/m <sup>2</sup> )							
Male	20.53	20.88	20.69	20.77	20.37	20.60±2.84	0.860
Female	18.79	18.64	19.22	18.22	19.05	18.75±3.13	0.690
SMMI	7.66	7.50	7.69	7.56	7.45	7.73±1.49	0.562
Phase angle	5.84	5.43	5.98	5.18	5.76	5.8±1.78	0.316

BMI, body mass index; FVC, forced vital capacity; FEV<sub>1</sub>, forced expiratory volume in one second; DLCO, diffusing capacity of lung for carbon monoxide; 6MWD, 6-minute walk distance; FFM, fat-free mass; FFMI, fat-free mass index; SMMI, skeletal muscle mass index.

25]. The most commonly described comorbidities were also the same as those reported in previous studies [26-28].

The reason for the average values of lung function tests in the first center to be lower than in the other hospitals was likely because the Clinic for Lung Diseases is a tertiary care institution that is treating patients who are on the lung transplant list.

Previous nutritional status studies of COPD patients have shown that there was a significant correlation between nutritional status and disease severity [10,29]. A correlation between these values was also found in our study.

Obesity could impair exercise capacity in COPD patients due to the increased mechanical load from carrying the extra weight, independent of the degree of airflow limitation [30]. However, in our study, this correlation was not demonstrated.

The limitation of this study is that patients living in the Mediterranean region were not questioned about their diet.

## Conclusions

This multicenter study conducted in four regions of Croatia is the first interregional study of COPD patients in the country. Considering the recent publication of recommendations for the prevention and treatment of malnutrition in patients with COPD in Croatia [31], it was expected that this study would provide an answer to the question of whether there was a specific region in Croatia with the lowest nutritional status values, thus requiring specific interventions at the health policy level. As the majority of Croatian COPD patients were not underweight with a high percentage of obese patients, it appears there is a need for additional health interventions aimed at weight reduction and increase in physical activity of this patient category.

## References

1. Global Initiative for Chronic Obstructive Lung Disease (GOLD). Global strategy for prevention, diagnosis and management of COPD: report 2023. Available from: <https://goldcopd.org/2023-gold-report-2/>. Accessed on: 6/03/2023.
2. Halpin DMG, Celli BR, Criner GJ, et al. The GOLD Summit on chronic obstructive pulmonary disease in low- and middle-income countries. *Int J Tuberc Lung Dis* 2019;23:1131-41.
3. Mathers CD, Loncar D. Projections of global mortality and burden of disease from 2002 to 2030. *PLoS Med* 2006;3: e442.
4. Eisner MD, Blanc PD, Sidney S, et al. Body composition and functional limitation in COPD. *Respir Res* 2007;8:7.
5. Laviolette L, Sava F, O'Donnell DE, et al. Effect of obesity on constant work rate exercise in hyperinflated men with COPD. *BMC Pulm Med* 2010;10:33.
6. O'Donnell DE, Deesomchok A, Lam YM, et al. Effects of BMI on static lung volumes in patients with airway obstruction. *Chest* 2011;140:461-8.
7. Vozoris NT, O'Donnell DE. Prevalence, risk factors, activity limitation and health care utilization of an obese, population-based sample with chronic obstructive pulmonary disease. *Can Respir J* 2012;19:e18-24.
8. White JV, Guenter P, Jensen G, et al. Consensus statement: Academy of Nutrition and Dietetics and American Society for Parenteral and Enteral Nutrition: characteristics recommended for the identification and documentation of adult malnutrition (undernutrition). *JPEN J Parenter Enteral Nutr* 2012;36:275-83.
9. Vestbo J, Prescott E, Almdal T, et al. Body mass, fat-free body mass, and prognosis in patients with chronic obstructive pulmonary disease from a random population sample: findings



- from the Copenhagen City Heart Study. *Am J Respir Crit Care Med* 2006;173:79-83.
10. Raad S, Smith C, Allen K. Nutrition status and chronic obstructive pulmonary disease: can we move beyond the body mass index? *Nutr Clin Pract* 2019;34:330-9.
  11. De Blasio F, Scalfi L, Di Gregorio A, et al. Raw bioelectrical impedance analysis variables are independent predictors of early all-cause mortality in patients with COPD. *Chest* 2019;155:1148-57.
  12. Luo Y, Zhou L, Li Y, et al. Fat-free mass index for evaluating the nutritional status and disease severity in COPD. *Respir Care* 2016;61:680-8.
  13. Nguyen HT, Collins PF, Pavey TG, et al. Nutritional status, dietary intake, and health-related quality of life in outpatients with COPD. *Int J Chron Obstruct Pulmon Dis* 2019;14:215-26.
  14. Mete B, Pehlivan E, Gülbaş G, Günen H. Prevalence of malnutrition in COPD and its relationship with the parameters related to disease severity. *Int J Chron Obstruct Pulmon Dis* 2018;13:3307-12.
  15. Trichopoulou A, Kouris-Blazos A, Wahlqvist ML, et al. Diet and overall survival in elderly people. *BMJ* 1995;311:1457-60.
  16. Fischer A, Johansson I, Blomberg A, Sundström B. Adherence to a Mediterranean-like diet as a protective factor against COPD: A nested case-control study. *COPD* 2019;16:272-7.
  17. ATS Committee on Proficiency Standards for Clinical Pulmonary Function Laboratories. ATS statement: guidelines for the six-minute walk test. *Am J Respir Crit Care Med* 2002;166:111-7.
  18. Kyle UG, Bosaeus I, De Lorenzo AD, et al. Bioelectrical impedance analysis-part II: utilization in clinical practice. *Clin Nutr* 2004;23:1430-53.
  19. NCD Risk Factor Collaboration (NCD-RisC). Trends in adult body-mass index in 200 countries from 1975 to 2014: a pooled analysis of 1698 population-based measurement studies with 19.2 million participants. *Lancet* 2016;387:1377-96.
  20. Medanić D, Pucarín-Cvetković J. Obesity--a public health problem and challenge. *Acta Medica Croat* 2012;66:347-54. [Article in Croatian].
  21. Maslarda D, Bressan L. Eating disorder - obesity: eating habits, physical activity and self-reported BMI in Croatia. *J Appl Health Sci* 2020;6:83-90. [Article in Croatian].
  22. Bhatta L, Leivseth L, Mai XM et al. GOLD classifications, COPD hospitalization, and all-cause mortality in chronic obstructive pulmonary disease: the HUNT study. *Int J Chron Obstruct Pulmon Dis* 2020;15:225-33.
  23. Kahnert K, Alter P, Young D, et al. The revised GOLD 2017 COPD categorization in relation to comorbidities. *Respir Med* 2018;134:79-85.
  24. Le LAK, Johannessen A, Hardie JA, et al. Prevalence and prognostic ability of the GOLD 2017 classification compared to the GOLD 2011 classification in a Norwegian COPD cohort. *Int J Chron Obstruct Pulmon Dis* 2019;14:1639-55.
  25. Varmaghani M, Dehghani M, Heidari E, et al. Global prevalence of chronic obstructive pulmonary disease: systematic review and meta-analysis. *East Mediterr Health J* 2019;25:47-57.
  26. Putcha N, Drummond MB, Wise RA, Hansel NN. Comorbidities and chronic obstructive pulmonary disease: prevalence, influence on outcomes, and management. *Semin Respir Crit Care Med* 2015;36:575-91.
  27. Smith MC, Wrobel JP. Epidemiology and clinical impact of major comorbidities in patients with COPD. *Int J Chron Obstruct Pulmon Dis* 2014;9:871-88.
  28. Cavallès A, Brinchault-Rabin G, Dixmier A, et al. Comorbidities of COPD. *Eur Respir Rev* 2013;22:454-75.
  29. Sabino PG, Silva BM, Brunetto AF. Nutritional status is related to fat-free mass, exercise capacity and inspiratory strength in severe chronic obstructive pulmonary disease patients. *Clinics (Sao Paulo)* 2010;65:599-605.
  30. James BD, Jones AV, Trethewey RE, Evans RA. Obesity and metabolic syndrome in COPD: is exercise the answer? *Chron Respir Dis* 2018;15:173-81.
  31. Vrbica Ž, Vukić Dugac A, Popović Grle S, et al. Recommendations for prevention and treatment of malnutrition in patients with chronic obstructive pulmonary disease. *Liječnički Vjesnik* 2018;140:183-9. [Article in Croatian].